

Duraglaze® Little Latte PhotoMug

Introducing the new Little Latte, the newest addition to the popular latte range that fits comfortably in the palm of your hand. At just 89mm tall it's one of our smallest designs; perfect for coffee machines. The Little Latte Photomugs offer photo quality print giving stunning visual results of your image. We offer an exclusive collection of patent protected Duraglaze® PhotoMugs, which have been independently tested to BS EN 12875-4 confirmed 100% dishwasher proof; they simply will not fade staying bright and vibrant for the lifetime of the mug. Furthermore, the Duraglaze® PhotoMugs come in various body styles which are printed in full colour by dye sublimation, some of them right from top to bottom, for photo quality print unobtainable by any other means.



Key Product Information

Product Code:	12197LIT
Commodity Code:	69120023
MOQ:	72
Size:	See Artwork Requirements
Branding Area:	180 x 92mm
Branding Method:	Dye Sublimation
Material:	Stoneware mug
Made In:	UK
PDF Proof:	24-48 Hours
Express Service Available:	48 Hour
Printed Proof Leadtime:	3 Working days
Leadtime:	5 Working days from proof approval
Colour:	White
Weight:	195g
Capacity:	7oz / 200ml

Packaging and Other Information

No Per Carton:	72
Packaging Details:	714 x 486 x 387mm
Carton Weight:	23kg
Standard Packaging:	MugSafe® Packaging
Alternative Packaging:	MugSafe® Solo

Recommendations and Limitations

QR Codes - Please note that the print process and substrates used in the production of this item may not always allow QR codes, if present on your artwork, to function correctly. When approving your proof, you are accepting that this may be the case and as such accept full liability for any malfunction of the QR code. Please wash mug before use.

The mug base can also be printed in 1 colour, extra charges apply.

Ideal For: Tourist Attractions, Builders Merchants, Councils, The Office and Home, Educational Organisations

Duraglaze® Little Latte PhotoMug

Sizes available: Approximate dimensions 89mm tall x 80mm diameter. Please note mugs may vary slightly in size and these details should be used for guidance only.

We can accept artwork by disk, email or you can upload onto our FTP site. Please contact us for details.

Programs:

Mac: QuarkXpress 7, Illustrator, PhotoShop, and Adobe In Design.

PC: PhotoShop and Adobe InDesign

Please supply us with:

- Finished version of the artwork.
 - All of the source files used to create the finished version, including all high resolution scans, all screen and printer fonts
- Label the disk with job title and return address.

All artwork supplied must be fully editable. The finished version should be supplied as a CMYK file (plus spot colour separations.)

Please note text must be no smaller than 8pt (15pt for etched mugs) and reversed out text should be larger and in bold.

Emailed artwork must be clearly labelled with your order number and company name in the reference line, or supplied on CD with the same information clearly marked. 4 colour process artwork needs to be 300dpi or higher.

Supply a print out:

Black and white or from a low-cost colour printer using the right file, not an earlier version. Label with PMS references for all corporate colours or other critical colour matches. Supply colour samples or swatches at the outset. Customer supplied printouts cannot be matched because there is no consistency of calibration between their machine and our press.

For Screen Printed designs please supply the following:

- Editable EPS file
- Image saved at 100% size or larger
- Pantone® references supplied for colours
- Fonts supplied or text saved as curves

Dye sublimation printed designs need a 2mm bleed and live matter must be 10mm from the edge of the mug, to ensure a crisp print quality.

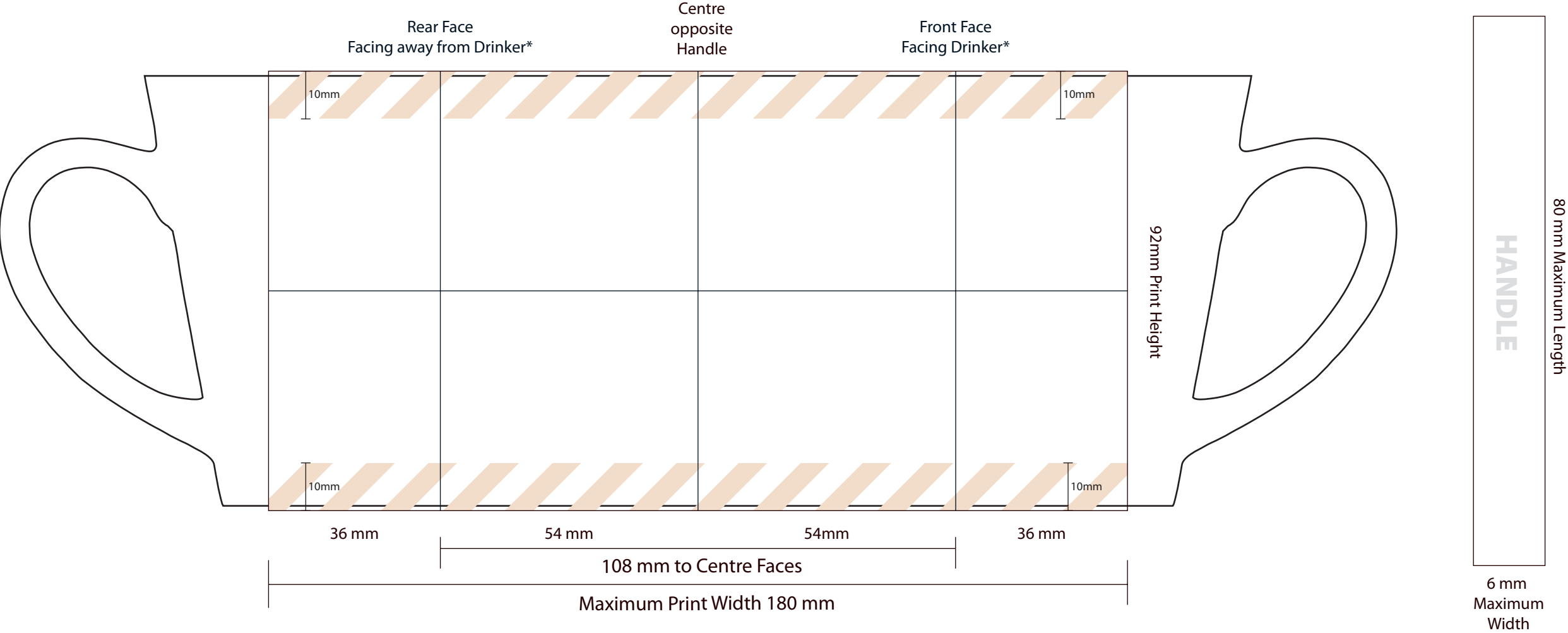
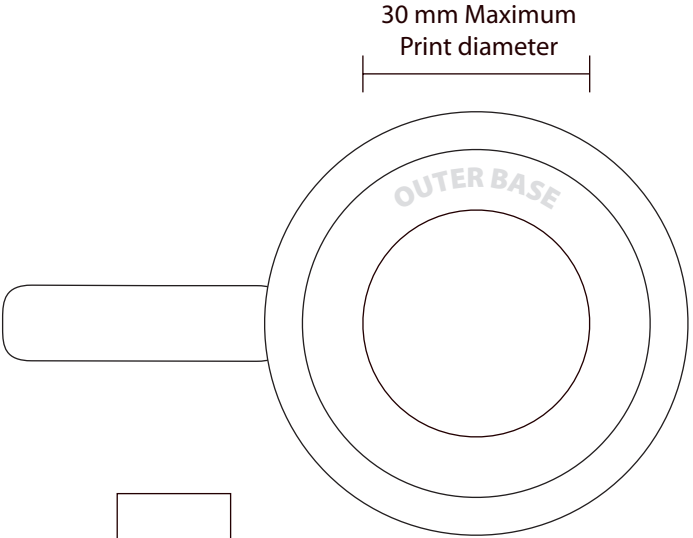
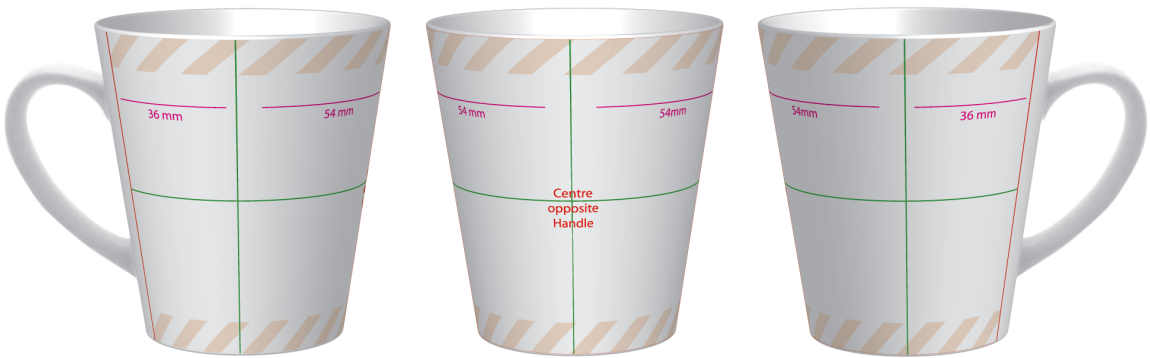
Due to the small size variances that can occur between mugs, as well as the need to have artwork which is warped to suit the Latte mug shape, straight lines or lines of text can sometimes appear askew, particularly if printed near to the edge.

If you would like further information regarding a specific design, please feel free to contact us

See the following page(s) for the artwork templates for this product.

All information correct at time of publication. Whilst we endeavour to maintain the accuracy of this document, details may change without notice.

Job Information		Print Information	Artwork Advisory
Job No:	402444	Process:	Dyesublimation
Description:	Sample	Dimensions:	180 x 92mm
Product:	Little Latte	Colour(s):	CMYK
Colour:	White		
Proof No:	1		
Date:	16/02/2015		
Repro:	AE		
			All dimensions are +/- manufacturing tolerances
			*Faces indicate a right hand drinker,
			Screen printed detail must be at least 1pt (0.353mm) thick
			Text should be minimum 8pt to remain legible. Light text on a dark background will reproduce better if bold
			Please avoid placing critical matter (text, Logos, Borders) within these areas



Due to variations beyond our control and the nature of the print process the colour on the pdf may differ from that on the final product.