

ColourFusion Eevo-Therm Bottle

A high quality thermal drinks bottle made from 304 grade stainless steel. Decorated with a stunning full colour, full wrap print around the entire outer body of the bottle. We offer ColourFusion Thermal Bottles from just 30 units. Keeps liquids hot for up to 12 hours and cold for up to 24 hours.



Key Product Information

Product Code:	12550THR
Commodity Code:	9617000000
MOQ:	50
Size:	See Artwork Requirements
Branding Area:	Within dimensions
Branding Method:	Dye Sublimation
Material:	Stainless Steel
Made In:	UK
PDF Proof:	24-48 Hours
Express Service Available:	Not Available
Printed Proof Leadtime:	3-5 Working days
Leadtime:	10 Working days from proof approval
Colour:	Silver or white with silver lid
Weight:	299g
Capacity:	500ml

Packaging and Other Information

No Per Carton:	50
Packaging Details:	400 x 780 x 300mm
Carton Weight:	20Kg
Standard Packaging:	White box
Alternative Packaging:	Printed Sleeve, Presentation Tube

Recommendations and Limitations

Hand wash only. Do not use in a microwave oven. Please wash mug before use.

Ideal For: Tourist Attractions, Builders Merchants, Councils, The Office and Home, Educational Organisations

ColourFusion Eevo-Therm Bottle

Sizes available: 250 x 67mm diameter

We can accept artwork by disk, email or you can upload onto our FTP site. Please contact us for details.

Programs:

Mac: QuarkXpress 7, Illustrator, PhotoShop, and Adobe In Design.

PC: PhotoShop and Adobe InDesign

Please supply us with:

- Finished version of the artwork.
 - All of the source files used to create the finished version, including all high resolution scans, all screen and printer fonts
- Label the disk with job title and return address.

All artwork supplied must be fully editable. The finished version should be supplied as a CYMK file (plus spot colour separations.)

Please note text must be no smaller than 8pt (15pt for etched mugs) and reversed out text should be larger and in bold.

Emailed artwork must be clearly labelled with your order number and company name in the reference line, or supplied on CD with the same information clearly marked. 4 colour process artwork needs to be 300dpi or higher.

Supply a print out:

Black and white or from a low-cost colour printer using the right file, not an earlier version. Label with PMS references for all corporate colours or other critical colour matches. Supply colour samples or swatches at the outset. Customer supplied printouts cannot be matched because there is no consistency of calibration between their machine and our press.

For Screen Printed designs please supply the following:

- Editable EPS file
- Image saved at 100% size or larger
- Pantone® references supplied for colours
- Fonts supplied or text saved as curves

Dye sublimation printed designs need a 2mm bleed and live matter must be 10mm from the edge of the mug, to ensure a crisp print quality.

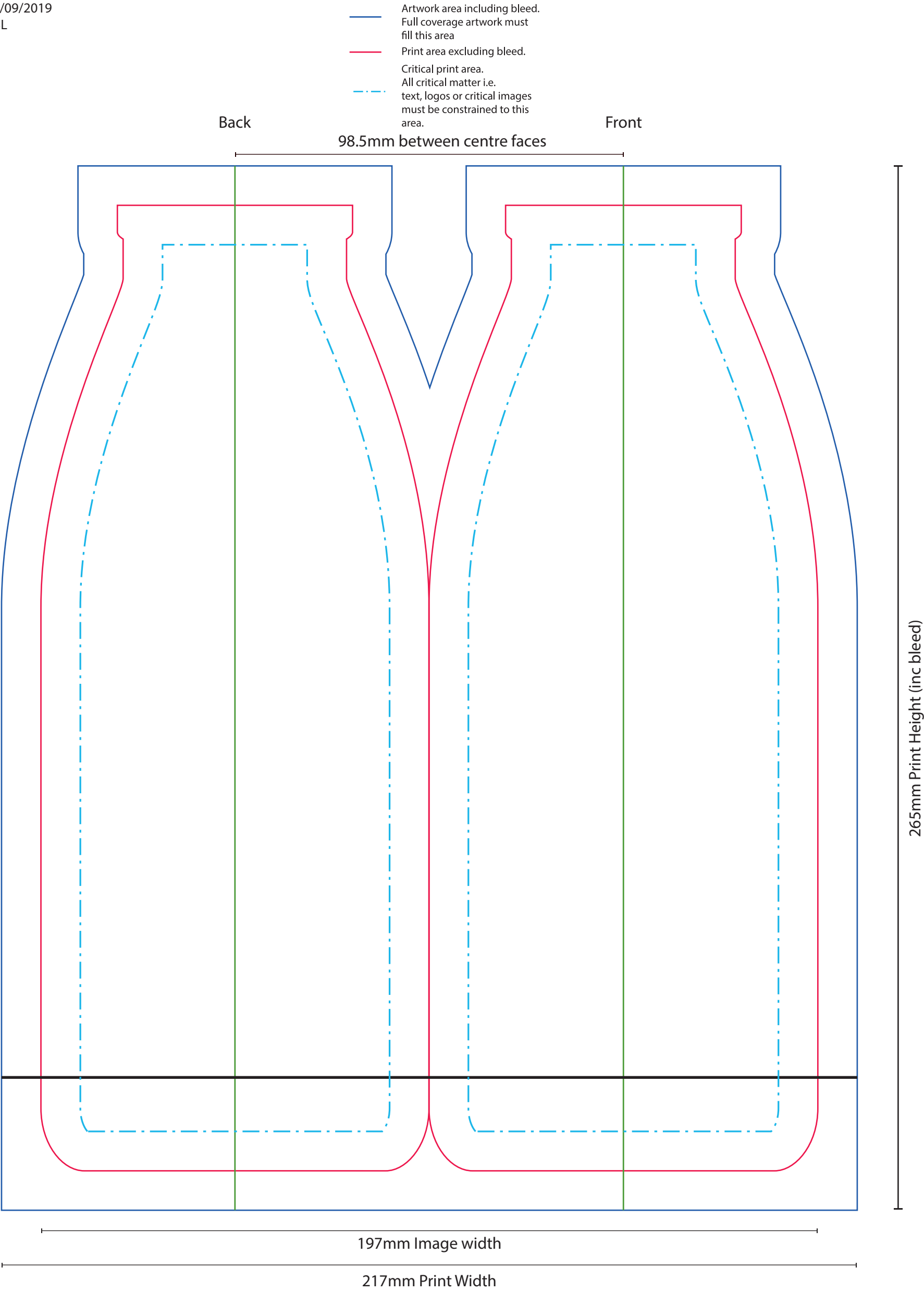
If you would like further information regarding a specific design, please feel free to contact us

QR Codes - Please note that the print process and substrates used in the production of this item may not always allow QR codes, if present on your artwork, to function correctly. When approving your proof, you are accepting that this may be the case and as such accept full liability for any malfunction of the QR code.

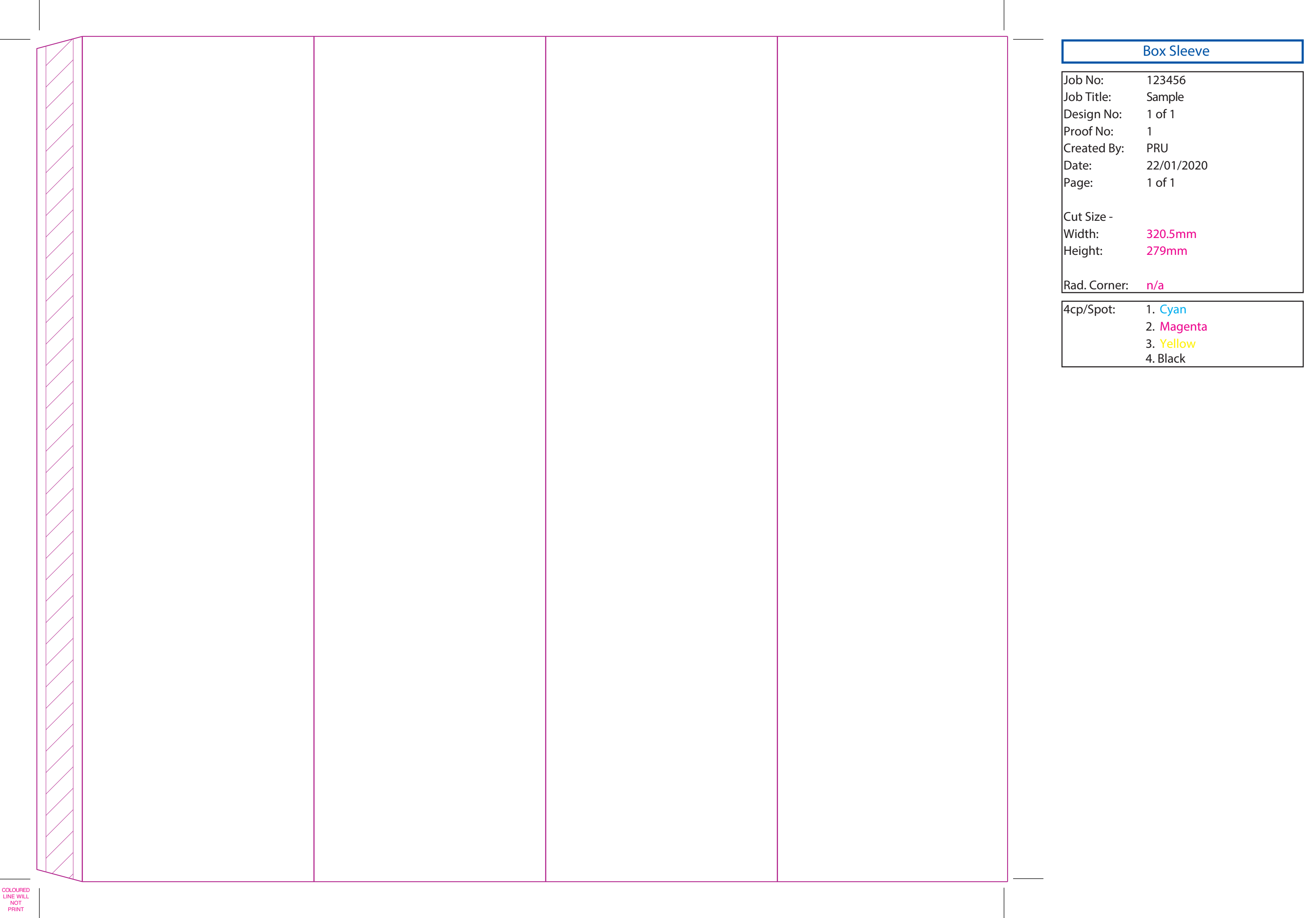
See the following page(s) for the artwork templates for this product.

All information correct at time of publication. Whilst we endeavour to maintain the accuracy of this document, details may change without notice.

Job Information	Print Information	Artwork Advisory
Job No: 483444	Process: Dye Sublimation	All dimensions are +/- manufacturing tolerances
Description: Sample	Dimensions: 197 x 245mm	
Product: Thermal Bottle 500ml	Dimensions: 217 x 265m inc bleed	Text should be minimum 8pt to remain legible. Light text on a dark background will reproduce better if bold
Colour: Silver	Colour(s): CMYK	
Proof No: 1		
Date: 05/09/2019		
Repro: ASL		



Any part of the artwork that shows white here on your proof, including text, logos and backgrounds to images will show as the silver of the product showing through. Dye sublimation uses CMYK ink and there is no white in this process. On a metal product the end result will be a metallic lustre effect.



Box Sleeve

Job No:	123456
Job Title:	Sample
Design No:	1 of 1
Proof No:	1
Created By:	PRU
Date:	22/01/2020
Page:	1 of 1
Cut Size -	
Width:	320.5mm
Height:	279mm
Rad. Corner:	n/a

4cp/Spot:	1. Cyan
	2. Magenta
	3. Yellow
	4. Black