

Colour Flooded Presentation Box

Compliment your mug with our new mug packaging range. Choose from Pantone matched boxes, flooded with your pantone colour and screen print branding, or vivid full colour boxes. Both are available with or without a display window, printed to order and from just 72 pieces.



Key Product Information

Product Code:	MP0027
MOQ:	72
Size:	See Artwork Requirements
Available Thickness:	2mm
Branding Area:	Within dimensions
Branding Method:	Screen Print
Material:	Cardboard
Made In:	UK
PDF Proof:	24-48 Hours
Express Service Available:	Not Available
Printed Proof Leadtime:	5 Working days
Leadtime:	5 Working days from proof approval
Colour:	Pantone matched
Weight:	28g
Capacity:	N/A

Packaging and Other Information

No Per Carton:	250 when supplied flat packed
Packaging Details:	475 x 350 x 340mm when supplied flat packed
Carton Weight:	8Kg when supplied flat packed
Standard Packaging:	Bulk Packed
Alternative Packaging:	N/A

Recommendations and Limitations

This is a presentation box only and is not suitable for use as a mailing carton

Ideal For: Trade Exhibitions, Cafés / Coffee Bars, Corporate Giveaways, Desktop Promotions

Colour Flooded Presentation Box

Sizes available: 115 x 85 x 105mm

Screen Print:

- Editable EPS file
- Image saved at 100% size or larger
- Pantone® references supplied for colours
- Fonts supplied or text saved as curves

Regardless of print method:

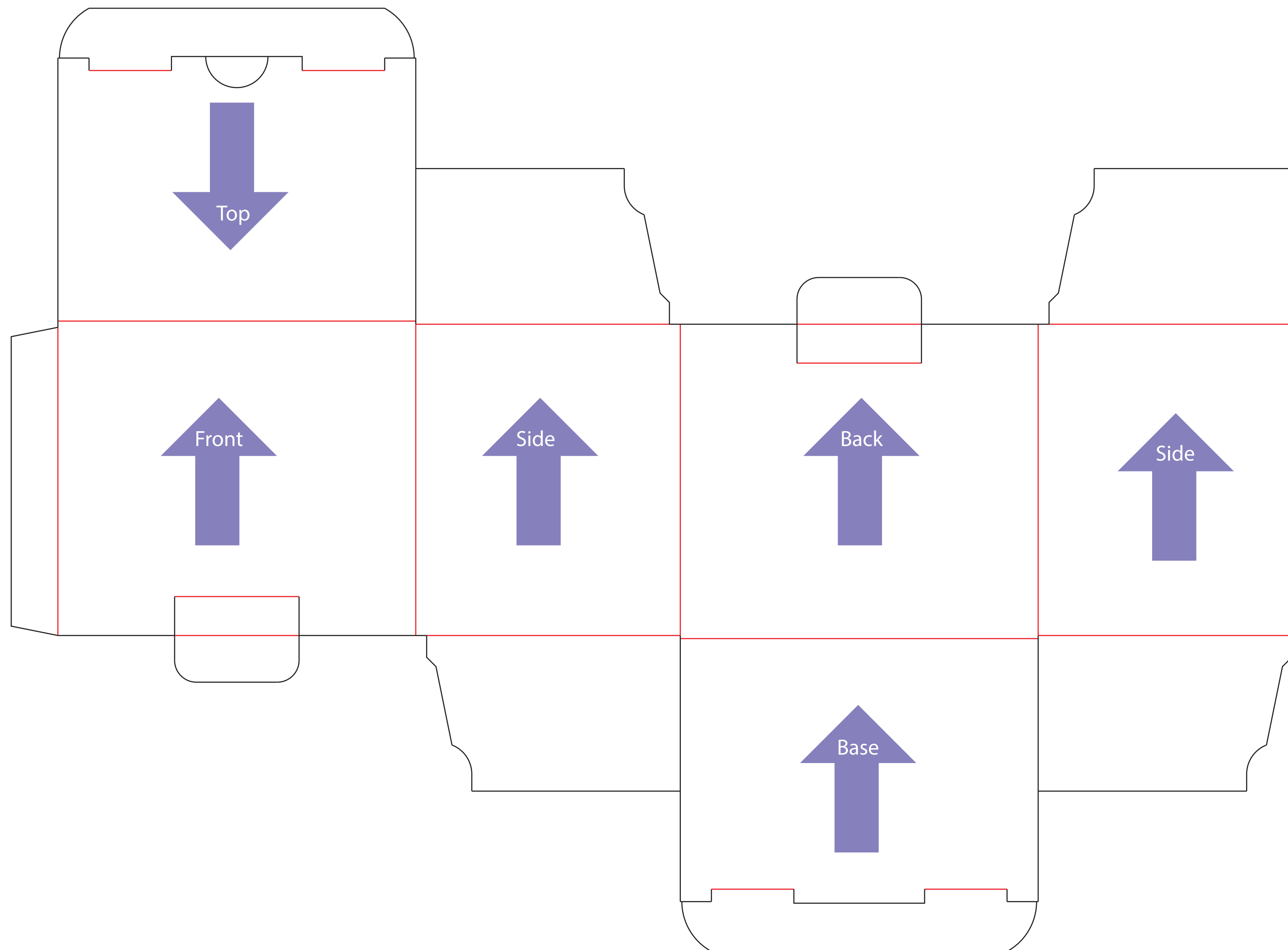
- Allow 10mm bleed all around the design.
- It is advisable to have a 5mm gap between the design and weld as welding can be effected when applied through ink.
- Artwork to be emailed with your order number and company name in the reference line or supplied on CD with same information clearly labelled.

Full detailed guidelines including limitations & recommendations are available for each printing method on request.

QR Codes - Please note that the print process and substrates used in the production of this item may not always allow QR codes, if present on your artwork, to function correctly. When approving your proof, you are accepting that this may be the case and as such accept full liability for any malfunction of the QR code.

See the following page(s) for the artwork templates for this product.

All information correct at time of publication. Whilst we endeavour to maintain the accuracy of this document, details may change without notice.



Full Colour Durham Plus Mug Box 2mm Thick Card

Tool No: 4753

Shape: Box

Product Size -

Width: 304mm

Height: 414mm

Artwork with Bleed -

Width: 310mm

Height: 420mm

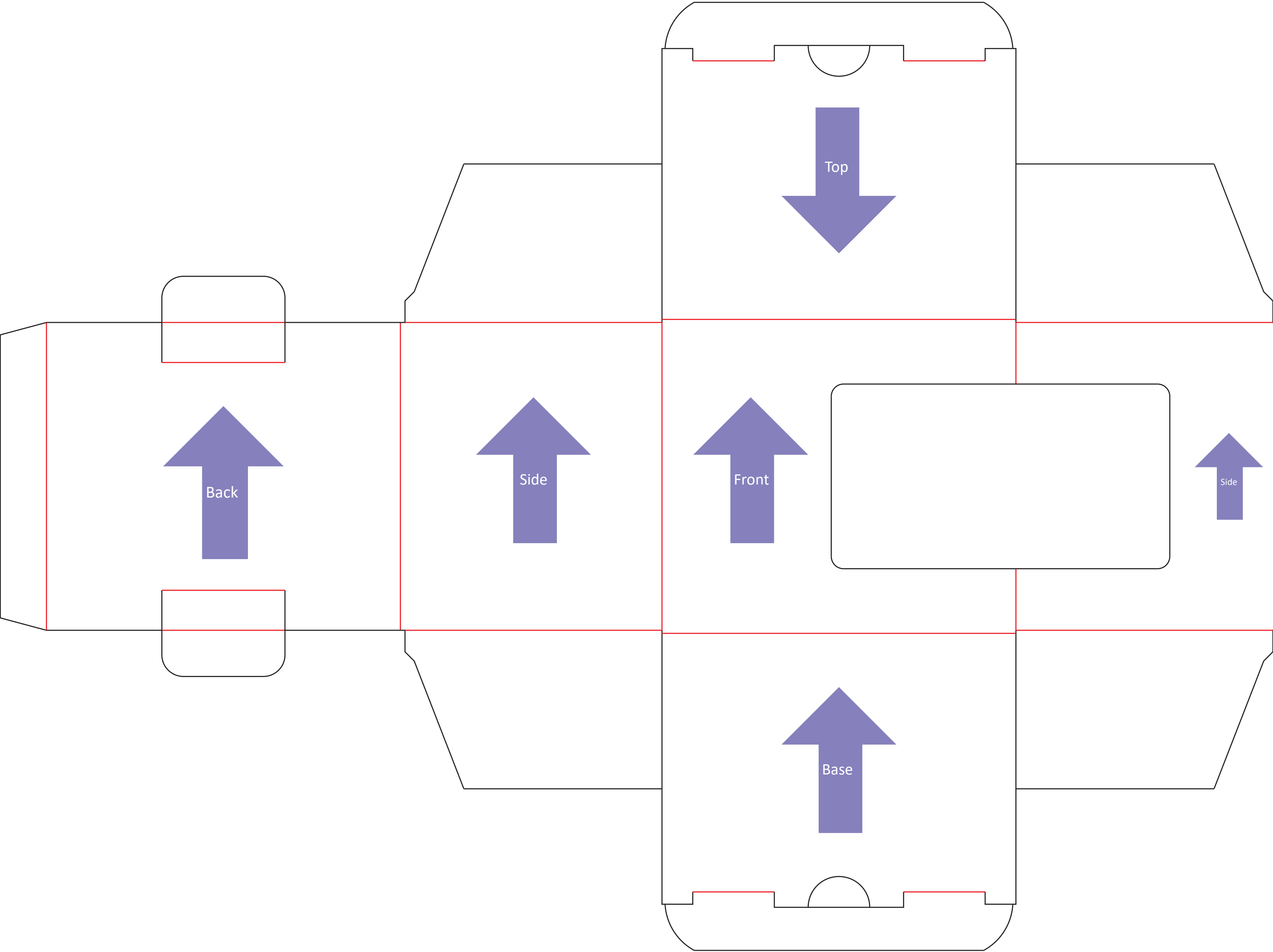
--- Please keep all live matter such as text, logos and other important images within this area.

Individual clipping masks for each panel. These are for use if design doesn't overlap sides. If in doubt about this aspect please call for advice.

Arrows show artwork orientation for each section. Text explains recommended print in flap areas.

This is a layered file, and is best used in illustrator. Place artwork on bottom layer named "Artwork".

This dieline represents a current finishing tool. Any alterations to this dieline may incur additional charges.



Full Colour Durham Plus Mug Box
2mm Thick Card With Window

Tool No:	D1382
Shape:	Box
Product Size -	
Width:	308mm
Height:	414mm
Artwork with Bleed -	
Width:	314mm
Height:	420mm

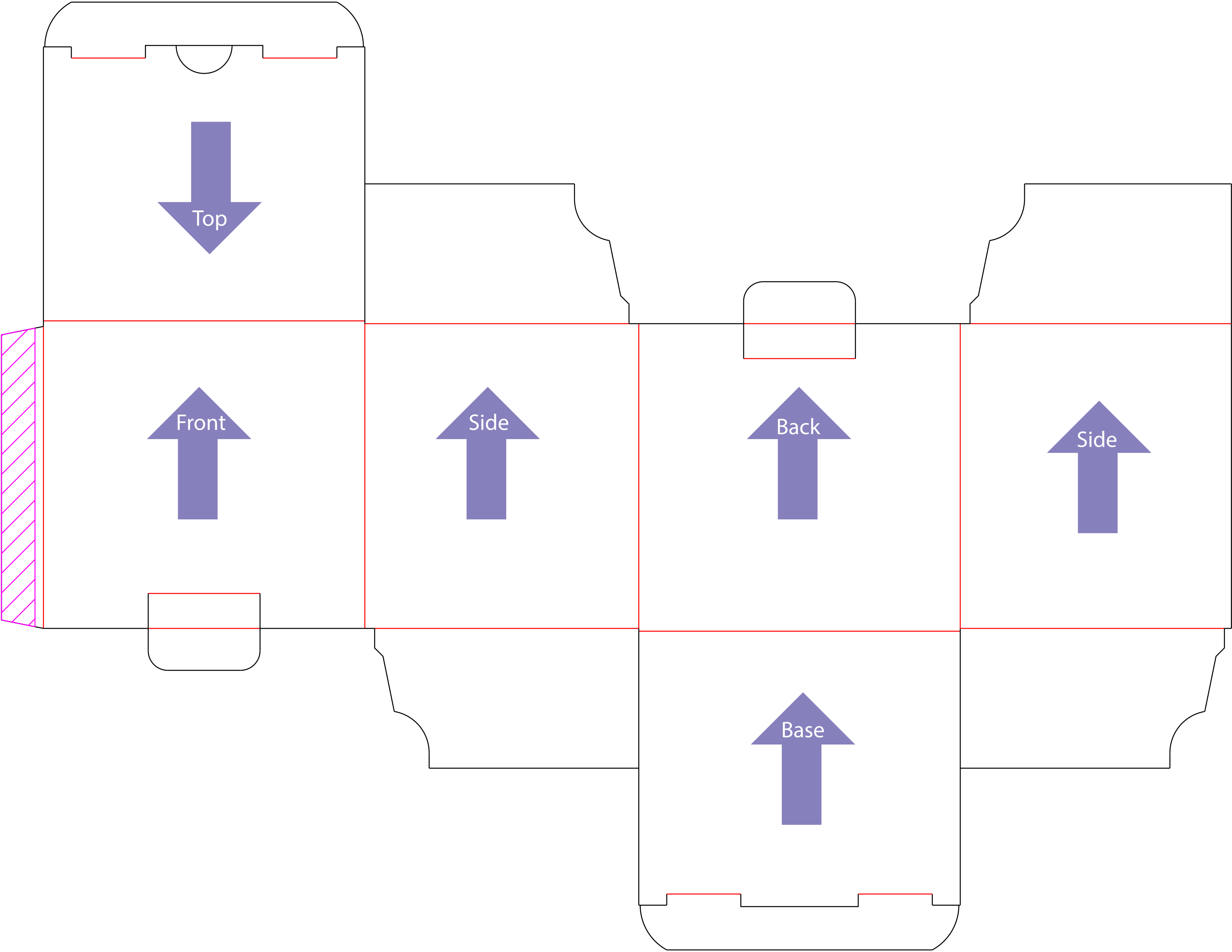
--- Please keep all live matter such as text, logos and other important images within this area.

Individual clipping masks for each panel. These are for use if design doesn't overlap sides. If in doubt about this aspect please call for advice.

Arrows show artwork orientation for each section. Text explains recommended print in flap areas.

This is a layered file, and is best used in illustrator. Place artwork on bottom layer named "Artwork".

This dieline represents a current finishing tool. Any alterations to this dieline may incur additional charges.



Full Colour Latte Mug Box
2mm thick card

Tool No:	4758
Shape:	Box
Product Size -	
Width:	339mm
Height:	440mm
Artwork with Bleed -	
Width:	345mm
Height:	446mm

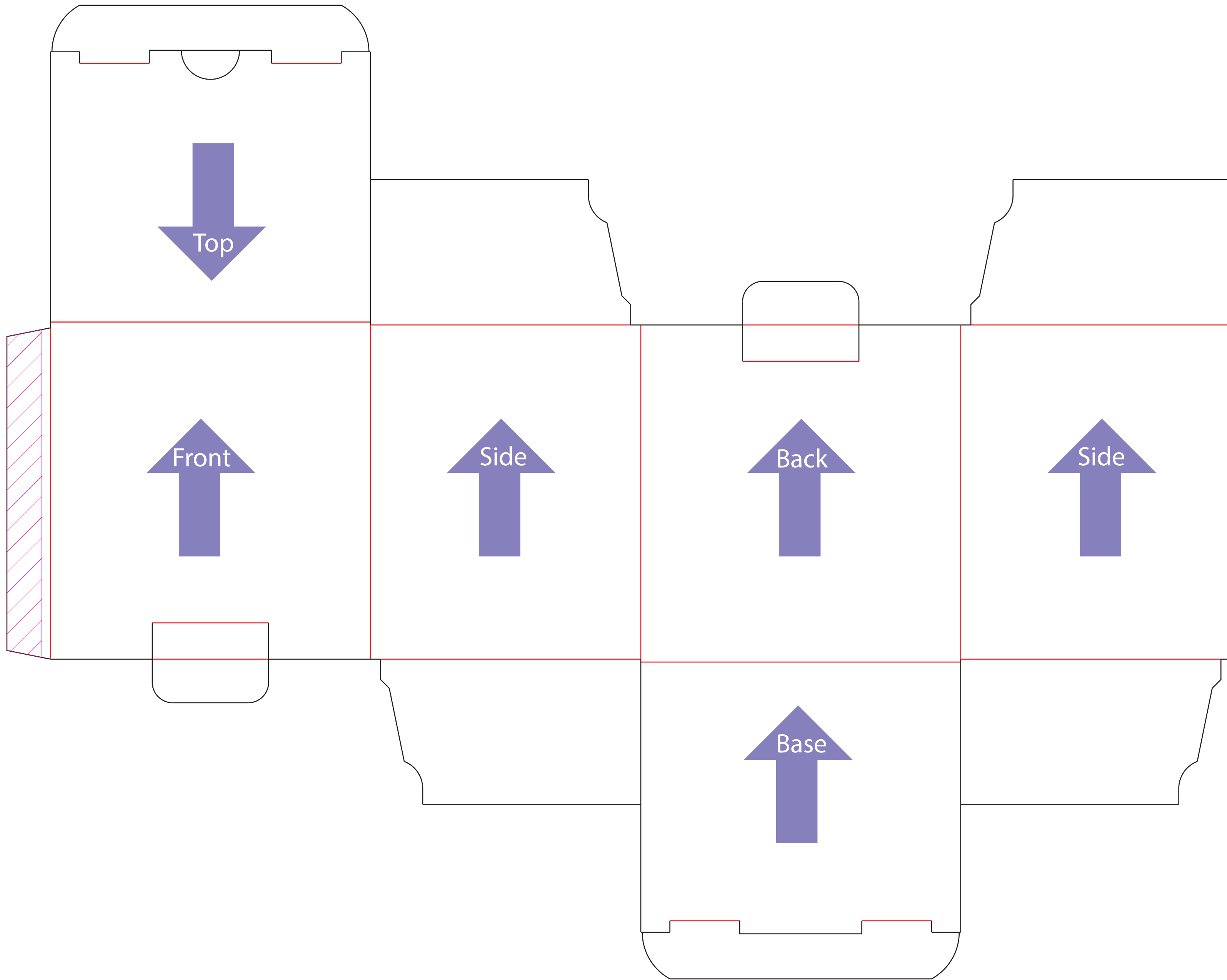
--- Please keep all live matter such as text, logos and other important images within this area.

Individual clipping masks for each panel. These are for use if design doesn't overlap sides. If in doubt about this aspect please call for advice.

Arrows show artwork orientation for each section. Text explains recommended print in flap areas.

This is a layered file, and is best used in illustrator. Place artwork on bottom layer named "Artwork".

This dieline represents a current finishing tool. Any alterations to this dieline may incur additional charges.



Full Colour Marrow Mug Box
2mm Thick Card

Tool No:	4755
Shape:	Box
Product Size -	
Width:	335mm
Height:	420mm
Artwork with Bleed -	
Width:	341mm
Height:	426mm

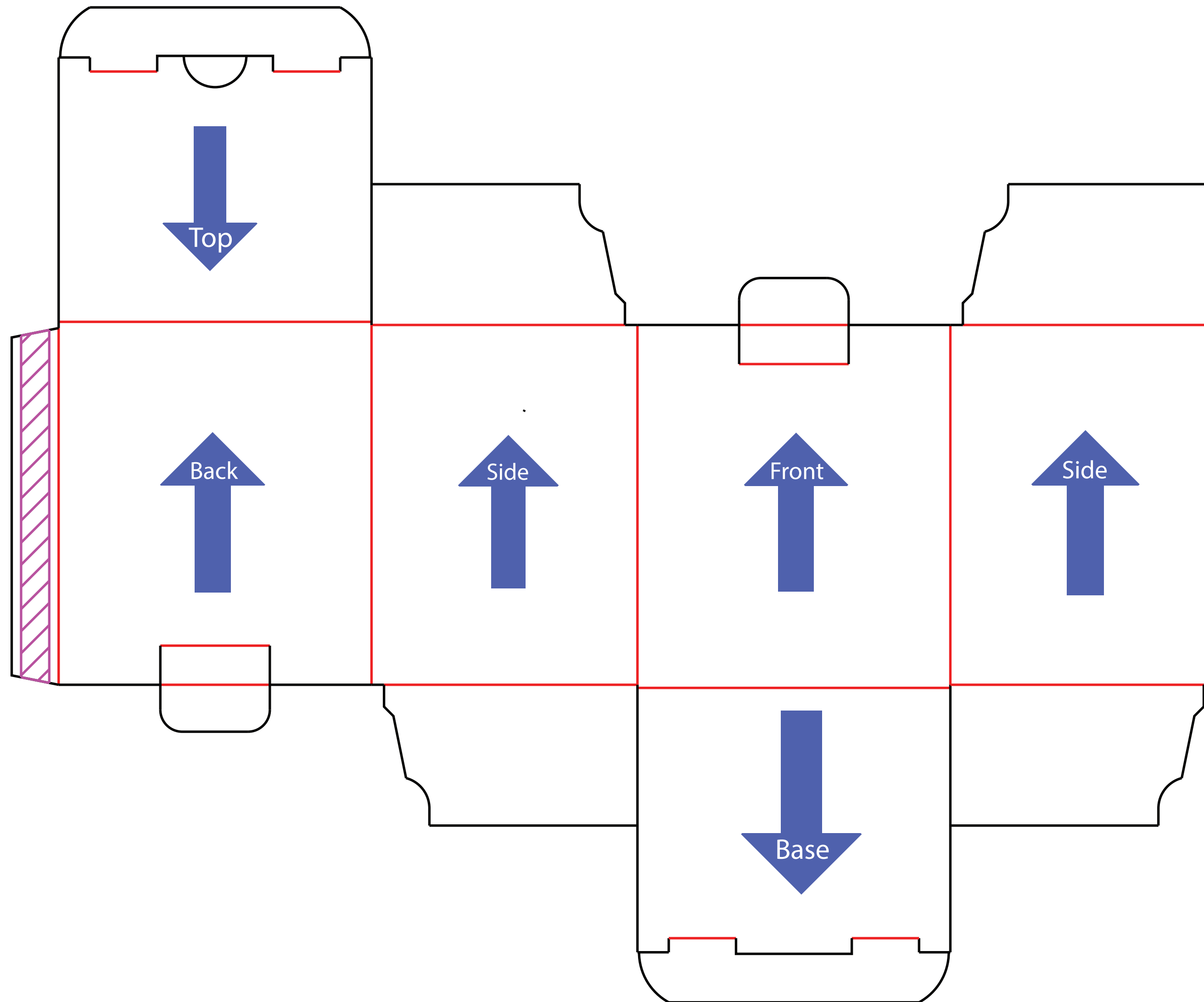
--- Please keep all live matter such as text, logos and other important images within this area.

Individual clipping masks for each panel. These are for use if design doesn't overlap sides. If in doubt about this aspect please call for advice.

Arrows show artwork orientation for each section. Text explains recommended print in flap areas.

This is a layered file, and is best used in illustrator. Place artwork on bottom layer named "Artwork".

This dieline represents a current finishing tool. Any alterations to this dieline may incur additional charges.



Full Colour Windsor Mug Box 2mm Thick

Tool No: 4761
Shape: Box

Product Size -
Width: 318mm
Height: 384mm

Artwork with Bleed -
Width: 324mm
Height: 390mm

--- Please keep all live matter such as text, logos and other important images within this area.

Individual clipping masks for each panel. These are for use if design doesn't overlap sides. If in doubt about this aspect please call for advice.

Arrows show artwork orientation for each section. Text explains recommended print in flap areas.

This is a layered file, and is best used in illustrator. Place artwork on bottom layer named "Artwork".

This dieline represents a current finishing tool. Any alterations to this dieline may incur additional charges.