

## Aluminium 600ml White Drink Bottle

Aluminium sports bottles printed in full colour by dye sublimation for exceptionally bright and vivid results. Available in 400ml or 600ml sizes, in a choice of silver or white bottles. Supplied with a threaded stopper, drinking cap and carabiner clip as standard. Ideal for outdoor activities, sporting events and leisure organisations.



### Key Product Information

Product Code:	12180600W
Commodity Code:	7615108090
MOQ:	48
Size:	See Artwork Requirements
Branding Area:	235 x 135mm
Branding Method:	Dye Sublimation
Material:	Aluminium
Made In:	UK
PDF Proof:	24-48 hours
Express Service Available:	Not Available
Printed Proof Leadtime:	3 Working days
Leadtime:	5 Working days from proof approval
Colour:	White
Weight:	165g
Capacity:	600ml

### Packaging and Other Information

No Per Carton:	60
Packaging Details:	500 x 485 x 345mm
Carton Weight:	9Kg
Standard Packaging:	Supplied in a plain white carton as standard.
Alternative Packaging:	N/A

### Recommendations and Limitations

Please wash before use.

Aluminium sports bottles are suitable for hand wash only.

Ideal For: Outdoor Activities, Sporting Events, Travel and Leisure Industries, Corporate Giveaways, Childrens Promotions

## Aluminium 600ml White Drink Bottle

Sizes available: 208 x 72mm

We can accept artwork by disk, email or you can upload onto our FTP site. Please contact us for details.

Programs: (all versions accepted)

Mac: QuarkXpress, Illustrator, PhotoShop and Freehand.

PC: CorelDraw, PhotoShop and Adobe InDesign.

Design recommendations: If reversing text out of a solid background: Dye sub print gives more problems with bleed so avoid fine typefaces. Set text in bold. Minimum point size 12.

Tints: Minimum of 10% difference between tint values to give a visual contrast. Printable range of 20% to 80%.

Scans: Low-resolution scans produce poor print. 600 dpi minimum for best results. Ensure scans have no colour cast. The print process will exaggerate the slightest contamination.

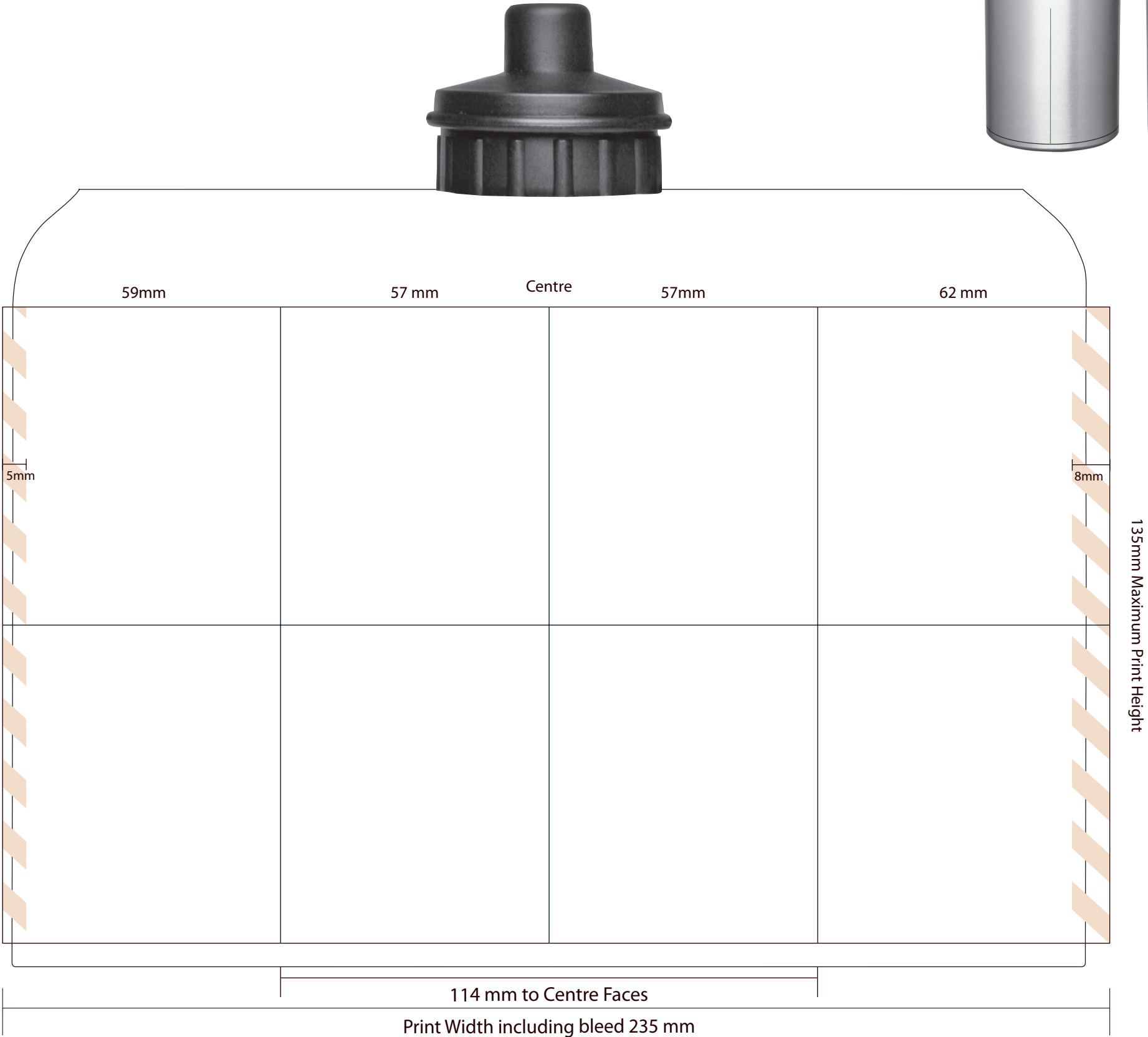
Please note: Colours printed on a metallic finish will have a metallic hue. Reversals will be silver (ie, white out copy will pick up the base colour of the product).

QR Codes - Please note that the print process and substrates used in the production of this item may not always allow QR codes, if present on your artwork, to function correctly. When approving your proof, you are accepting that this may be the case and as such accept full liability for any malfunction of the QR code.

See the following page(s) for the artwork templates for this product.

All information correct at time of publication. Whilst we endeavour to maintain the accuracy of this document, details may change without notice.

Job Information		Print Information	Artwork Advisory
Job No:	402444	Process:	Dye Sublimation
Description:	Sample	Dimensions:	228 x 135mm
Product:	Sports Bottle 600ml	Colour(s):	CMYK
Colour:	Silver		All dimensions are +/- manufacturing tolerances
Proof No:	1		Text should be minimum 8pt to remain legible.
Date:	16/02/2015		Light text on a dark background
Repro:	AE		will reproduce better if bold
			Please avoid placing critical matter (text, Logos, Borders) within these areas



Due to variations beyond our control and the nature of the print process the colour on the pdf may differ from that on the final product.

Any part of the artwork that shows white here on your proof, including text, logos and backgrounds to images will show as the silver of the product showing through. Dye sublimation uses CMYK ink and there is no white in this process. On a metal product the end result will be a metallic lustre effect.

12180 600ml Sports bottle